

Draft Local Input Points for Division Needs Transportation Projects

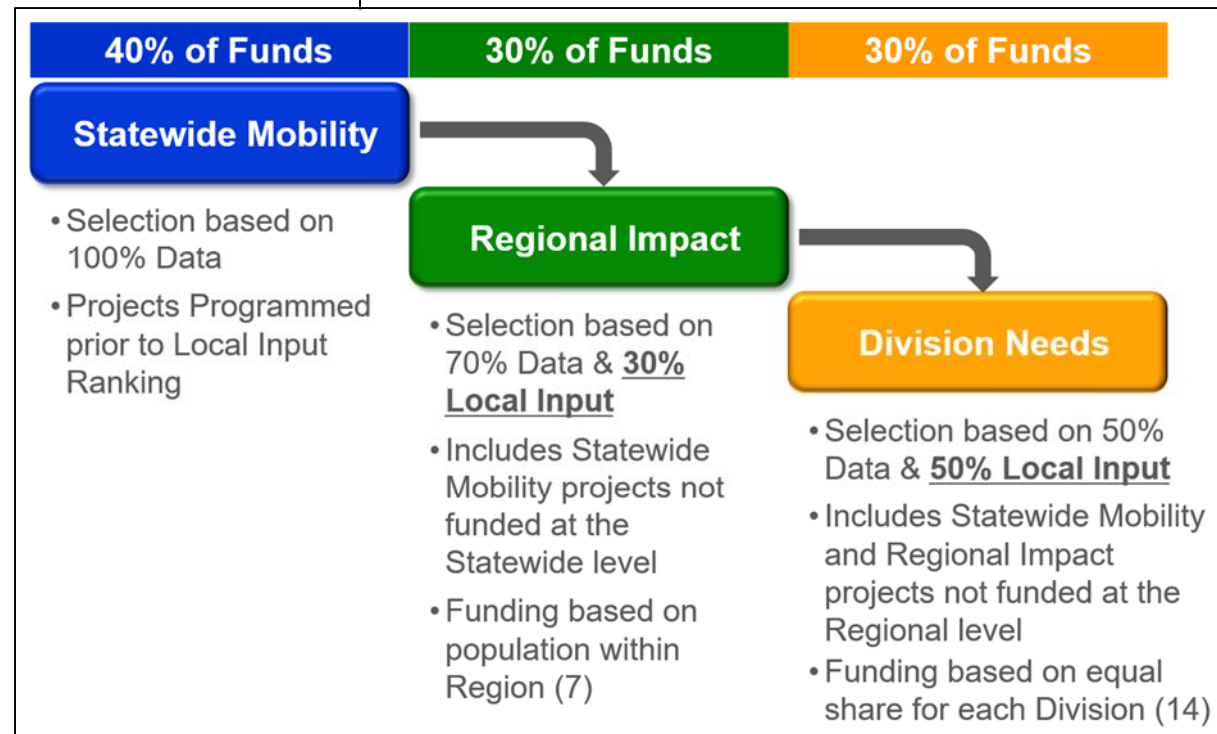
FRENCH BROAD RIVER METROPOLITAN PLANNING ORGANIZATION
SEPTEMBER 28, 2018

INTRODUCTION

The Strategic Transportation Investments (STI) law governs the process in which the State of North Carolina prioritizes transportation projects. The law was passed in 2013 with the intent of creating a data-driven, collaborative process between NCDOT, planning organizations, local governments, and the public to efficiently utilize funding for transportation improvements across the state.

As part of the prioritization process, projects are solicited from planning organizations and NCDOT Divisions. Projects submitted into the prioritization process are placed into three different funding categories based on facility and project types: Statewide Mobility, Regional Impact, and Division Needs. Project scoring for the Statewide Mobility funding category is based solely on quantitative data developed by the Prioritization

Workgroup. Metropolitan Planning Organizations (MPOs), Rural Planning Organizations (RPOs), and Division Engineers assign local input points to projects in the Regional Impact and Division Needs funding categories. These points are applied in the calculation of the final project scores for Prioritization 5.0 to determine which projects are funded at the Regional Impact and Division Needs funding categories.



To ensure local input points are being applied through a process that is transparent, MPOs and RPOs are required to develop a methodology that outlines how they will determine which projects will have local input points applied. This local input methodology for the French Broad River MPO has been developed to meet the requirements of Session Law 2012-84 which requires that MPOs and RPOs have a process that includes at least two criteria (with at least one being qualitative), for determining project prioritization.

MPO METHODOLOGY

The French Broad River [MPO's methodology](http://www.fbrmpo.org/spot/) for assigning local input points is available- in full- on the MPO website (<http://www.fbrmpo.org/spot/>), but to paraphrase, the MPO's methodology is based on the following tenants:

- The MPO will not “cascade” projects from one funding category to another by default, but will consider cascading projects on a case-by-case basis
- The MPO will assign local input points on projects, based on its approved methodology, until it has either exhausted its local input points (1,800) or until the

estimated amount of funding available for Division 13 and 14 (plus an additional 20%) has been exhausted

- The MPO Board may decide to make exceptions to the methodology based on public input, coordination with NCDOT, or at the Board's discretion

The MPO's methodology gives projects up to 100 points. Quantitative data (congestion, safety, multimodal, environmental, and freight) makes up 75% of the overall score. Qualitative data (local priorities as determined by local government staff or the Henderson County Transportation Advisory Committee) makes up the remaining 25% of the overall score. The score of the projects based on the MPO's methodology helps to recommend to the MPO Board what projects should receive local input points.

THE EFFECT OF LOCAL INPUT POINTS

The MPO's allocation of local input points on projects in the Regional Impact and Division Needs funding categories plays a part in determining the project's overall score in the state's prioritization process. For each funding category the MPO's allocation of local input points accounts for the following percentage of a project's P 5.0 score:

Regional Impact Funding Category – 15%

Division Needs Funding Category – 25%

NCDOT Division Engineers may also allocate points to projects in MPO Planning Area.

PROCESS AND TIMELINE

The general process for applying local input points for Division Needs projects in the French Broad River MPO is as follows:

Task	Date
September 27, 2018	MPO Board approves cascaded projects and Draft Local Input Points
October 3, 2018	Public Comment on Draft Local Input Points opens
October 11, 2018	MPO TCC recommends Final Local Input Point allocation
October 24, 2018	Public Comment on Draft Local Input Points closes
October 25, 2018	MPO Board approves Final Local Input Point allocation

DRAFT LOCAL INPUT POINTS

On September 27, 2018 the MPO Board elected to cascade a number of projects (five from Buncombe County and six from Haywood County) to the Division Needs tier. The Board also elected to make a modification to the projects receiving draft points, moving points from an access management project on US 74-A (Fairview Road) in Buncombe County to a modernization project on NC 81 (Swannanoa River Road) in Buncombe County. These changes have been reflected below.

FUNDING AND POINTS

The French Broad River MPO has 1,800 local input points available for projects within the MPO planning area. Per the MPO's methodology, 500 of these points will be reserved for non-highway projects at the Division Needs tier. The MPO's methodology applies local input points to projects until the MPO is either out of points or out of estimated available funding (estimated funding +20%). Any exceptions to the methodology are required to be approved by the MPO Board.

All of the counties in NCDOT Divisions 13 and 14, compete for funding in the Division Needs tiers in Division 13 as well as Division 14. Funding is allocated to different divisions around the state evenly (each division receives 1/14th of the funding available.) The following information is based on information made available from NCDOT for P 5.0.

Total Funding Estimated for Division 13

\$54,000,000

Total Funding Estimated for Division 13 +20%

\$64,800,000

Total Funding Estimated for Division 14

\$166,000,000

Total Funding Estimated for Division 14 + 20%

\$199,200,000

HIGHWAY PROJECTS RECEIVING DRAFT LOCAL INPUT POINTS

Route / Facility Name	From / Cross Street	To / Cross Street	Description	Cost to NCDOT	Division Needs Total Score (Out of 100)	County	MPO Score	Draft Points	Notes
SR 1332 (North Louisiana Avenue)	US 19-23 (Patton Avenue)	SR 1338 (Emma Road)	Modernize roadway, improve intersections. Include complete streets improvements.	\$3,600,000	32.09	Buncombe	96	100	
SR 2500 (Blue Ridge Road)	NC 9	Blue Ridge Assembly Drive, White Pine Drive	Modernize roadway, upgrade intersections. Coordinate with I-4409 Blue Ridge Road Interchange project. Include complete streets improvements.	\$4,000,000	18.14	Buncombe	84	100	
US 276	SR 1134 (Crymes Cove Rd), Raccoon Rd		Realignment of offset intersection.	\$2,700,000	31.3	Haywood	83	100	
US 276 (Russ Avenue)	US 23-74 (Great Smoky Mountain Expressway)	US 19 (Dellwood Rd)	Access management	\$13,600,000	30.94	Haywood	79	100	
SR 1525 (Duncan Hill Road), SR 1508 (Signal Hill Road), SR 1503 (N Main Street)	US 64 (Four Seasons Boulevard)	US 25 Bus (Asheville Highway)	Modernize roadway. Add turn lanes, widen shoulders, and improve geometrics and intersection operations as appropriate.	\$30,300,000	24.13	Henderson	77	100	
US 70 (Tunnel Road)	US 74 Alternate (South Tunnel Road)	Eastern end of the Tunnel	Roadway improvements and access management to include complete streets elements.	\$21,400,000	34.3	Buncombe	71	100	
NC 81 (Swannanoa River Road)	US 70 (Tunnel Road)	US 74 (South Tunnel Road)	Add Roadway Improvements with Complete Streets elements.	\$23,100,000	31.02	Buncombe	69	100	Points moved from Fairview Road

Route / Facility Name	From / Cross Street	To / Cross Street	Description	Cost to NCDOT	Division Needs Total Score (Out of 100)	County	MPO Score	Draft Points	Notes
SR 1631 (Crossroads Parkway)	Current terminus	SR 1632 (Calvin Edney Rd)	Extend SR 1631 (Crossroads Parkway) to SR 1632 (Calvin Edney Rd).	\$1,510,000	26.73	Madison	55	100	
US 19, US 23	NC 215 in Canton	SR 1836 (Chestnut Mountain Rd)	Modernize Roadway	\$29,559,000	25.75	Haywood	53	100	
SR 2162 (Blythe Street)	NC 191(Haywood Road)	US 64 (6th Avenue W)	Modernize roadway. Add turn lanes, widen shoulders, and improve geometrics and intersection operations as appropriate. Include complete streets improvements.	\$10,200,000	18.41	Henderson	51	100	
US 276 (Jonathan Creek)	US 19	I-40	Upgrade roadway to current NCDOT standards. Construct or upgrade turn lanes at various crossovers. Install paved shoulders on the median side with rumble strips and install wide outside shoulders.	\$20,700,000	27.69	Haywood	50	23	Partially in MPO
US 19 (Soco Road)	SR 1304 (Fie Top Road at Ghost Town in the Sky)	Blue Ridge Parkway	Modernize Roadway.	\$26,600,000	28.58	Haywood	49	100	
SR 3116 (Mills Gap Road)	SR 3136 (Cane Creek Road)		Realign skewed intersection and add left turn lanes	\$1,300,000	29.86	Buncombe	33	100	
US 23 (US 23/74 (Great Smoky Mountains Expy))	SR 1777(Balsam View Drive)	SR 1158 (Old Balsam Rd)	Modernize Roadway and construct Westbound climbing lane	\$23,000,000	31.37	Haywood, Jackson	32	77	Maximum points remaining

NON-HIGHWAY PROJECTS RECEIVING LOCAL INPUT POINTS

Route / Facility Name	From / Cross Street	To / Cross Street	Description	Cost to NCDOT	Division Needs Total Score (Out of 100)	County(s)	MPO Score	Draft Points	Local Match
SR 1263 (Deaverview Road)	US 19/23/74A (Patton Avenue)	Westmore Drive	Construct protected, linear pedestrian sidewalk facility on Deaverview Road from Patton Avenue to Westmore Drive	\$ 2,564,000	37.31	Buncombe	100.00	100	\$ 641,000.0
NC 251 Greenway	Hill Street	Broadway	Construct a new multi-use path on Riverside Drive from Hill Street to Broadway.	\$ 2,303,200	32.86	Buncombe	100.00	100	\$ 575,800.0
Grove Street Sidewalks	Barnwell Street	US 176 (Spartanburg Highway)	Construct a new sidewalk in the City of Hendersonville from Barnwell Street to US 176.	\$ 723,040	38.62	Henderson	100.00	100	\$ 180,760.0
Bent Creek Greenway (Hominy Creek/WNC Farmer's Market Segment)	Hominy Creek Greenway	French Broad River Greenway	Construct a new multi-use path from Hominy Creek Greenway to Hominy Creek River Park.	\$ 2,525,253	28.94	Buncombe	75.00	100	\$ 631,313.3
Richland Creek Greenway-North	Rec Park	Woodland Drive	Construct a new section of multi-use path from the existing recreation park to Woodland Drive in the Town of Waynesville.	\$ 360,800	22.13	Haywood	25.00	100	\$ 90,200.0

HIGHWAY PROJECTS NOT RECEIVING DRAFT LOCAL INPUT POINTS

Route / Facility Name	From / Cross Street	To / Cross Street	Description	Cost to NCDOT	Division Needs Total Score (Out of 100)	County	MPO Score	Draft Points	Notes
US 74 Alternate (Fairview Road)	NC 81 (Swannanoa River Road)	Cedar Street	Implement Access Management and spot intersection improvements. Include complete streets elements.	\$17,000,000	31.71	Buncombe	72	0	Points moved to Swannanoa River Road
SR 1224 (Monte Vista Road, Sand Hill School Road)	SR 3412 (Sand Hill Road)	Holbrook Road	Modernize roadway, improve intersections.	\$34,100,000	26.27	Buncombe	49	0	Exceeds Division 13 Funding
SR 3503 (Overlook Road)	NC 146 (Long Shoals Road)	US 25 (Hendersonville Road)	Conduct feasibility study on Overlook Road from NC 146 (Long Shoals Road) to US 25 (Hendersonville Road) to evaluate potential for modernization and intersection improvements.	\$6,500,000	25.64	Buncombe	41	0	On-going study, no construction funding current sought
SR 3446 (Enka Lake Road)	NC 112 (Sand Hill Road)	Queen Road	Widen roadway.	\$14,400,000	23.01	Buncombe	41	0	Exceeds Division 13 Funding
US 19 Business (Weaverville Highway), US 23 Business	Beaver Drive near the Asheville / Woodfin Town Limit	SR 1740 (New Stock Road)	Weaverville Highway - Woodfin - Major Upgrade	\$32,900,000	24.26	Buncombe	39	0	Exceeds Division 13 Funding

Route / Facility Name	From / Cross Street	To / Cross Street	Description	Cost to NCDOT	Division Needs Total Score (Out of 100)	County	MPO Score	Draft Points	Notes
SR 1338 (Ben Lippen Road, Emma Road)	SR 1373 (Old County Home Road)	SR 1332 (Louisiana Avenue)	Modernize roadway. Intersection improvements, improve geometrics and sight distance. Include complete streets improvements.	\$29,300,000	22.08	Buncombe	38	0	Exceeds Division 13 Funding
US 25 ALT (Sweeten Creek Road)	I-40	London Road	Modernize roadway by adding turn lanes, access management and intersection improvements with complete streets elements.	\$14,100,000	25.32	Buncombe	37	0	Exceeds Division 13 Funding
New Route - Balfour Parkway	NC 191 (Brevard Road)	US 25 Business	Balfour Parkway - Construct New 4-Lane Expressway, Hendersonville	\$61,890,000	34.66	Henderson	36	0	No points requested
New Route - Balfour Parkway	I-26	US 64	Balfour Parkway - Construct New 4-Lane Expressway, Hendersonville	\$50,105,000	34.66	Henderson	36	0	No points requested
SR 1345 (Butler Bridge Rd)	NC 280 (Boylston Highway)	US 25 (Hendersonville Road)	Widen roadway.	\$42,900,000	13.02	Henderson	35	0	No points requested
SR 1365 (N. Rugby Rd), SR 1309 (S. Rugby Rd.)	US 64 West	Butler Ridge Road	Modernize Roadway.	\$6,500,000	22.58	Henderson	32	0	
SR 1331 (Banner Farm Road)	SR 1426 (School House Road)		Improve the intersection of SR 1331 (Banner Farm Road) and SR 1426 (School House Road)	\$1,500,000	16.28	Henderson	27	0	

Route / Facility Name	From / Cross Street	To / Cross Street	Description	Cost to NCDOT	Division Needs Total Score (Out of 100)	County	MPO Score	Draft Points	Notes
SR 3501 (Clayton Road)	NC 191 (Brevard Road)	NC 146 (Long Shoals Road)	Clayton Road-modernization and intersection improvements.	\$10,700,000	15.19	Buncombe	26	0	
SR 1358 (Fanning Bridge Road)	US 25	NC 280	Modernize roadway. Add turn lanes, widen lanes and shoulders, and improve geometrics and intersection operations as appropriate. Incorporate complete streets improvements.	\$28,000,000	9.18	Henderson	26	0	
New Route	SR 1781 (Broadway Street)	NC 63 (New Leicester Highway)	Conduct feasibility study to determine connection between SR 1781 (Broadway Street) and NC 63 (New Leicester Highway), to consider new and existing routes.	\$33,500,000	14.56	Buncombe	22	0	
SR 3431 (Pond Road)	NC 112 (Sardis Road)	NC 191 (Brevard Road)	Upgrade road to current standards, to include paved shoulders	\$8,000,000	13.07	Buncombe	18	0	
SR 3498 (Ledbetter Road)	NC 191 (Brevard Road)	NC 146 (Long Shoals Road)	Upgrade facility to current standards. Include paved shoulders.	\$17,000,000	11.72	Buncombe	18	0	
SR 1173 (White Pine Drive)	US 64 (Brevard Road)	Hebron Road	Upgrade Roadway	\$15,800,000	10.77	Henderson	14	0	

NON-HIGHWAY PROJECTS NOT RECEIVING LOCAL INPUT POINTS

Route / Facility Name	From / Cross Street	To / Cross Street	Description	Cost to NCDOT	Division Needs Total Score (Out of 100)	County(s)	MPO Score	Draft Points	Local Match
French Broad River Greenway West	SR 3556 (Amboy Road)	SR 3548 (Haywood Road)	Construct paved multi-use path connecting French Broad River Park at Amboy Road/Lyman Street to existing multi-use path at New Belgium Brewery facility (Haywood Road)	\$ 3,544,187	38.16	Buncombe	75.00	0	\$ 886,046.8
Bent Creek-Lake Julian Greenway Phase II	French Broad River	Lake Julian	Construct multi-use path from Lake Julian to the French Broad River	\$ 2,888,326	32.56	Buncombe	75.00	0	\$ 722,081.4
Old Haywood Road Sidewalks	Patton Avenue	Smokey Park Highway	Construct new sidewalks from Patton Avenue to Smokey Park Highway.	\$ 1,879,054	30.29	Buncombe	75.00	0	\$ 469,763.5
Johnston Boulevard Sidewalks	Patton Avenue	Iona Circle	Construct new sidewalks on Johnston Boulevard in the City of Asheville from Patton Avenue to Iona Circle.	\$ 1,218,093	29.82	Buncombe	75.00	0	\$ 304,523.3
Flat Rock Greenway	Highland Lake Road	Carl Sandburg Home	Construct a new multi-use path in the Village of Flat Rock from Highland Lake Road to the Carl Sandburg Home.	\$ 988,264	29.28	Henderson	50.00	0	\$ 247,066.0

Route / Facility Name	From / Cross Street	To / Cross Street	Description	Cost to NCDOT	Division Needs Total Score (Out of 100)	County(s)	MPO Score	Draft Points	Local Match
Hominy Creek Greenway	Enka High School	Sand Hill Road	Construct a phase of the Hominy Creek Greenway from Enka High School, passing through Enka Elementary School, across Sand Hill Road, following Hominy Creek by the Buncombe County Sports Park and to Sand Hill Road north of the intersection with Sardis Road.	\$ 5,080,522	28.16	Buncombe	50.00	0	\$1,270,130.4
Bent Creek Greenway (WNC Farmers Market to Asheville Outlets)	WNC Farmers Market	Asheville Outlets	Construct a new multi-use path from the WNC Farmer's Market to Asheville Outlets along NC 191	\$ 3,112,978	27.92	Buncombe	50.00	0	\$ 778,244.5
Buncombe County-Mountain Mobility 2019 Expansion Vehicles	N/A	N/A	Two 25-foot Light Transit Vehicles with CNG units and two Lift Vans. Buncombe County-Mountain Mobility expansion vehicles recommended in the CTSP for FY 2019.	\$ 340,286	26.48	Buncombe	50.00	0	\$ 85,071.5
Fonta Flora Trail	Charlotte Street	Town Limits East of High Street	Construct a new multi-use path in Black Mountain from Charlotte Street to Town Limits as part of the State Fonta Flora Trail.	\$ 660,492	26.22	Buncombe	50.00	0	\$ 165,123.0

Route / Facility Name	From / Cross Street	To / Cross Street	Description	Cost to NCDOT	Division Needs Total Score (Out of 100)	County(s)	MPO Score	Draft Points	Local Match
Greenway-Jackson Park to Blue Ridge CC	Jackson Park	Blue Ridge Community College	Construct greenway along existing sewer easement from terminus of existing Oklawaha Greenway in Jackson Park to Blue Ridge Community College.	\$ 862,431	26.00	Henderson	50.00	0	\$ 215,607.8
North Blue Ridge Road	US 70	Fortune St	Construct sidewalks along North Blue Ridge Road from US 70 to end of existing sidewalk on Fortune Street.	\$ 478,795	23.81	Buncombe	25.00	0	\$ 119,698.8
French Broad River Multimodal Bridge	Westfeldt Park	Future Park	Construct a bicycle and pedestrian bridge over the French Broad River near NC 280	\$ 813,809	22.55	Henderson	25.00	0	\$ 203,452.3
Oklawaha Greenway North	Brookside Camp Rd	Berkeley Ball Park	Construct a new multi-use path from Berkley Park to Brookside Camp Road.	\$ 1,657,660	21.95	Henderson	25.00	0	\$ 414,415.0
Reems Creek Greenway	Quarry Road	Mill Park	Construct Reems Creek Greenway Quarry Road Section and Section 1	\$ 3,360,000	21.71	Buncombe	25.00	0	\$ 840,000.0
Buncombe County-Mountain Mobility 2020 Expansion Vehicles	N/A	N/A	Two 25-foot Light Transit Vehicles with CNG units and one Lift Van. Buncombe County expansion vehicles recommended in the CTSP for FY 2020	\$ 277,009	21.48	Buncombe	25.00	0	\$ 69,252.3
Oklawaha Greenway North (Phase IV)	Westfeldt Park	Butler Bridge Road	Construct a new multi-use path from Westfeldt Park to Butler Bridge Road in Henderson County	\$ 872,000	21.01	Henderson, Buncombe	25.00	0	\$ 218,000.0

Route / Facility Name	From / Cross Street	To / Cross Street	Description	Cost to NCDOT	Division Needs Total Score (Out of 100)	County(s)	MPO Score	Draft Points	Local Match
Richland Creek Greenway	Hazelwood Park	Boyd Avenue	Construct a new multi-use path along Richland Creek Greenway Corridor in the Town of Waynesville from Hazelwood Park to Boyd Avenue.	\$ 492,919	20.60	Haywood	0.00	0	\$ 123,229.8
Riverwalk Greenway Phase III	East of NC 9	In the Oaks Trail	Construct a New Multi-Use Path in Black Mountain from East of NC 9 to the In the Oaks Trail	\$ 730,086	20.23	Buncombe	0.00	0	\$ 182,521.5
NC 280 Multi-Use Path	North Mills River Road	French Broad River	Construct a new multi-use path from the French Broad River to North Mills River Road	\$ 1,263,362	18.13	Henderson	0.00	0	\$ 315,840.5
NC 280 Multi-Use Path	North Mills River Road	Haywood Road (NC 191)	Construct Multi-Use Path on NC 280 from North Mills River Road to Haywood Road (NC 191)	\$ 618,028	17.89	Henderson	0.00	0	\$ 154,507.0
Bailey Branch Greenway	Hickory Drive	Banjo Branch Road	Construct a new multi-use path in Mars Hill from Hickory Drive to Forest Street.	\$ 986,658	17.74	Madison	0.00	0	\$ 246,664.5
US 70 Road Diet	Blue Ridge Road	East of Sutton Street	Convert US 70 from a five-lane facility to a four or three-lane facility with improved bicycle and pedestrian facilities.	\$ 815,370	16.76	Buncombe	0.00	0	\$ 203,842.5
US 19/23 New Clyde Hwy	Blackwell Drive (NC 215)	Greenberry Street (SR 1577)	Construct Sidewalk	\$ 650,400	13.46	Haywood	0.00	0	\$ 162,600.0